



4 HP Pneumatic Chain Saw

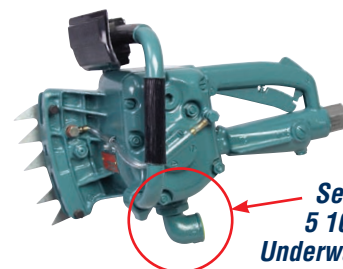
Powerful cutting of wood, polyethylene and plastic

Used successfully for many years in polyethylene plants, petrochemical industries, utilities, underground mines and marine applications

- Pneumatic power is safer than gas or electric in hazardous atmospheres and wet environments, including underwater applications
- Low maintenance and easy startup – saw chain and motor are automatically oiled by two separate lubricating systems
- Powerful 4 HP motor at 90 PSI air pressure, 92 CFM
- Chain guard to protect operator
- Available with 15", 17", 21" and 25" cutting capacity
- .404 pitch Super Chisel saw chain is standard
- Carbide-tipped and Ripping saw chain are optional



Model 5 1007 0040
25" cutting capacity



Series 5 1008:
Underwater chain saw with exhaust valve

Air Tool Line Conditioner for underwater air tools to displace moisture. Developed to inhibit rust and corrosion of air motors. 1 quart/liter, order part number MS 9105.



CHAIN SAWS

Model No.	Power	Cutting Capacity	PSI	CFM	Length with Bar	Weight (lbs.)	Air Connection	Hose ID
For General Use								
5 1007 0003	4 HP	15"	90	92	29"	22	3/4" NPT (ID)	5/8"
5 1007 0010	4 HP	17"	90	92	33"	25	3/4" NPT (ID)	5/8"
5 1007 0020	4 HP	21"	90	92	37"	28	3/4" NPT (ID)	5/8"
5 1007 0040	4 HP	25"	90	92	41"	31	3/4" NPT (ID)	5/8"
For Underwater Use*								
5 1008 0030	4 HP	21"	90	92	37"	29	3/4" NPT (ID)	5/8"
5 1008 0040	4 HP	25"	90	92	41"	31	3/4" NPT (ID)	5/8"

Carbide-Tipped Saw Chain

- More cutting efficiency with less down time – stays sharp 25x longer and lasts 10x longer than regular-life saw chains
- Efficiently cuts tough materials, including plastics, railroad ties, utility poles, hardwoods and soft masonry materials
- Withstands severe cutting conditions that include sand, mud, salvage work, etc.
- Easily resharpener
- Available in 10", 15", 17", 21" and 25" lengths



Close-up of Carbide-tipped Chain

Also available: Super Chisel and Ripping saw chain in 10", 15", 17", 21" and 25" lengths

Guide Bars for wood and plastics also available. Contact CS Unitec for more information.



4 HP Pneumatic Chain Saw with Brake



- Pneumatic power for use in hazardous atmospheres and wet environments, including underwater applications
- Low maintenance and easy startup – saw chain and motor are automatically oiled by two separate lubricating systems
- Chain brake for stopping chain movement during kickback or repositioning of saw during cutting
- Powerful cutting of polyethylene, plastics and wood
- 5 1027 series plastic-cutting chain saws come with integrated water feed
- .404 pitch Super Chisel saw chain is standard
- Carbide-tipped and Ripping saw chain are optional



ATEX Certified



**Series 5 1026, 5 1027, 5 1028 and 5 1029
Pneumatic chain saw with brake**

**Available with 11", 17", 21" and 25"
cutting capacity**

Model No.	Cutting Capacity	Length with Bar	Weight (lbs.)
For Cutting Wood, with brake			
5 1026 0010	17"	33"	25
5 1026 0020	21"	37"	28
5 1026 0040	25"	41"	31
For Cutting Plastic, with brake and water feed system			
5 1027 0010	17"	33"	25
5 1027 0020	21"	37"	28
5 1027 0040	25"	41"	31
5 1027 9100	Pipe clamp for straight cutting of plastic.		
For Underwater Use, with brake			
5 1028 0010	17"	33"	25
5 1028 0020	21"	37"	28
5 1028 0040	25"	41"	31
For Underground/Coal Mining Use, with brake			
5 1029 0010	17"	33"	25
5 1029 0020	21"	37"	28
5 1029 0040	25"	41"	31

* Optional 11" bar available on special order, Part No. 5 1005 7160. Contact CS Unitec for more information.

Pneumatic Chain Saw with Brake All Models

Motor Power	4 HP
PSI	90
CFM	92
Air Connection	3/4" NPT (ID)
Hose ID	5/8"

New hydraulic chain saw with brake also available. Contact CS Unitec for details.



**Pipe clamp for straight cutting of
HDPE and plastic pipe.
For use with 5 1027 series.
Part No. 5 1027 9100**



Utility Pneumatic Chain Saw

- Ideal all-purpose air chain saw – compact, lightweight and powerful
- Only 5.4 lbs., 10" capacity
- Ideal for utilities, mines, construction and agriculture

Model 5 1005 0010

Motor Power	1.2 HP
Cutting Capacity	10"
PSI	90
CFM	30
Length	21"
Weight	5.4 lbs.
Air Connection	1/4" NPT (ID)

**Model 5 1005 0010
10" cutting capacity
Includes built-in
chain oiler**





Hydraulic Chain Saws

Versatile, lightweight saw for utility and maintenance

CHAIN SAWS



**Model ACH000
Pistol Grip Saw
(above/right)**

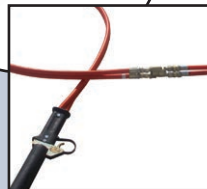
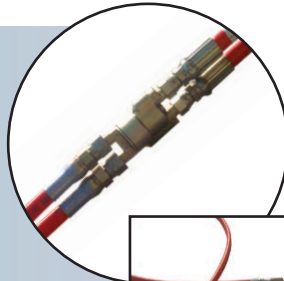
- Up to 6.5 HP, high-torque gear motor
- Open/closed hydraulic system
- Pistol grip with safety trigger lock and insulated handle
- Patented spool system eliminates heat generation, for safer operation
- Ideal for use in utilities, mines, construction and agriculture
- Pole saw models ACS-70 and ACS-80 feature non-conductive fiberglass pole for long reach (overall lengths: ACS-70 - 6.5'; ACS-80 - 7.5')
- Models ACS-70 and ACS-80 approved for live line work
- Optional hose swivel to eliminate tangled hoses (see below)



**Model ACS-70
Pole Saw with
optional 360°
Hydraulic Hose
Swivel (above/
right)**

**Optional 360° Hydraulic Hose Swivel
(Part No. 640080)**

- In-line, 2-hose hydraulic swivel
- Tools can be twisted 360° without tangling hoses
- Pressure balanced for optimal performance, even at full working pressure
- Fits 1/4" and 3/8" hydraulic hose



Model ACH000-12 - Pistol Grip Saw

Motor Power	Up to 6.5 HP
Handle	Pistol Grip
Motor Specifications	Oil Flow: 3-8 GPM @ 2000 PSI
Overall Length (w/bar)	23"
Bar Length	12" (14" and 16" optional*)
Weight	5.8 lbs.
Hose Connection	3/8" JIC 37°

*For 14" bar, order no. ACH000-14; for 16" bar, order no. ACH000-16

Model ACS-70 - Pole Saw

Motor Power	Up to 6.5 HP
Handle	Pistol Grip
Motor Specifications	Oil Flow: 3-8 GPM @ 2000 PSI
Overall Length (w/bar)*	77"
Bar Length	12" (14" and 16" optional)
Weight	8.8 lbs.
Hose Connection	3/8" JIC 37°

*For 7.5 ft. overall length, order no. ACS-80

New hydraulic chain saw with bar lengths of 11" to 25" also available. Contact CS Unitec for details.

PowerGrit Air Utility Saw

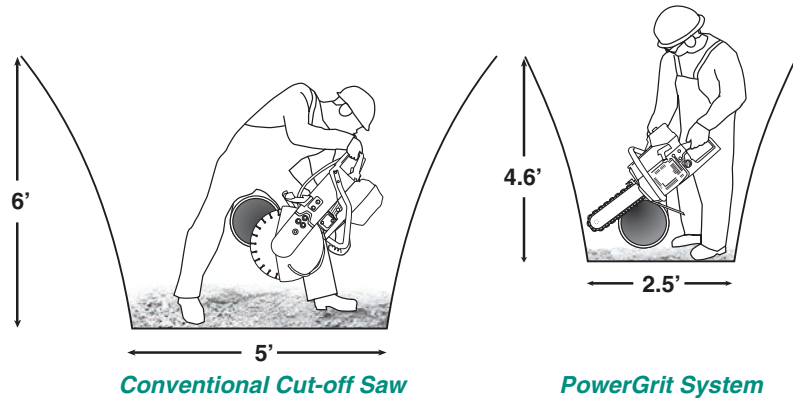


Cut ductile iron pipe underground with minimal excavation

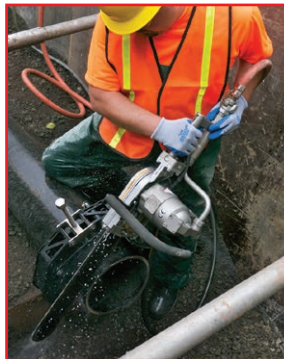


The PowerGrit system allows the user to perform the entire cut from one position – a feature especially helpful in reducing the amount of excavation required in underground cuts.

- Ideal for utility, commercial infrastructure, fire & rescue, construction and underwater applications
- Cut ductile iron (DI) pipe
- Patent-pending chain design with brazed layer diamond coating
- 15" and 20" bar length available
- Single-side access to pipe
- Reduced excavation, labor time and operator effort
- Improved control and operator safety
- Can cut concrete by changing to AirFORCE F4™ diamond chain – see page 36
- Double flat drive shaft eliminates Trantorque



CHAIN SAWS



PowerGrit Accessories

Description	Order no.
15" PowerGrit Chain	PG 52-3810
20" PowerGrit Chain	PG 53-5080
PowerGrit Pipe Clamp (12" cap.; includes mounting axle)	PG 56-9960



PowerGrit Pipe Clamp – Order No. PG 56-9960

12" capacity. Developed for use in underground pipe applications for safety, accuracy and ease of use. Solid, stable cutting platform that improves operator safety and cut precision in all applications.

Model No.	Power	No Load Speed	Max. Depth of Cut	Motor Specifications	Weight w/ Bar and Chain	No Load Torque (in.-lbs.)	Noise Level at 3 ft.
Pneumatic PowerGrit Chain Saw							
CS 536664-PG2*	6.5 HP	5700 RPM	15"	124 CFM @ 90 PSI (6 bar)	32	104	88 dB
CS 536664-PG3**	6.5 HP	5700 RPM	20"	124 CFM @ 90 PSI (6 bar)	33	104	88 dB

*For 15" PowerGrit Saw and Pipe Clamp – Part No. CS 536664-PG2C

**For 20" PowerGrit Saw and Pipe Clamp – Part No. CS 536664-PG3C